



WELCOME TO TOUJEO®

(insulin glargine) injection 300 Units/mL



**HERE IS YOUR DIGITAL STARTER KIT.
LET'S GET STARTED.**



*Eligibility Restrictions and Offer Terms apply.

The health information contained herein is for general educational purposes only. Your healthcare professional is the best source of information regarding your health. Please consult your healthcare professional if you have questions about your health or treatment.

Please see Important Safety Information throughout and at the back of this brochure.



HELLO AND WELCOME!

Whether you're new to long-acting insulin or just getting started on Toujeo®, you've come to the right place for resources to help support you with managing your diabetes. **We want to ensure that you have access to resources to help you have a positive experience using Toujeo® long-acting insulin pens.** In addition to what you and your doctor have discussed regarding your treatment, the guides and information listed below may help you learn more about Toujeo SoloStar® and Toujeo® Max SoloStar®. Toujeo Max SoloStar is recommended for those who require at least 20 units of long-acting insulin per day. There's material about how to use Toujeo pens, manage your diabetes, establish a routine, travel with your insulin pen, and much, much more. **So, let's get started!**

Here's what you'll find in your downloadable digital starter kit:



1

WHAT TO UNDERSTAND

Use this handy guide to help give you a solid start on Toujeo, including how it may help you manage your diabetes, what your numbers should look like, and what to keep an eye on when you start treatment.

2

LEARN MORE ABOUT INSULIN

It's all about insulin, what it does, and what happens when your body doesn't produce enough of this naturally occurring hormone. See how long-acting insulin can help.

3

STARTING ON AND STAYING ON TOUJEO

This guide may help you with managing your diabetes by providing tips and strategies to establish routines and find a plan that works for you to stay on track with your treatment. You won't have to do this alone.

4

INJECTION GUIDE

Learn how to use Toujeo long-acting insulin pens and how they can fit into your active lifestyle.

5

A GUIDE FOR TALKING TO YOUR DOCTOR

It's important for you to be an active participant in deciding how to manage your diabetes. This guide provides questions and guidance to have productive conversations with your healthcare providers.

6

FAQs

This is a set of commonly asked questions and answers about diabetes treatment, how Toujeo may help you, and more.

What is Toujeo U-300 (insulin glargine) injection 300 Units/mL?

Prescription Toujeo is a long-acting man-made insulin used to control high blood sugar in adults and children who are 6 years of age and older with diabetes mellitus.

- Toujeo is not for the treatment of diabetic ketoacidosis
- It is not known if Toujeo is safe and effective in children under 6 years of age

Important Safety Information for Toujeo U-300 (insulin glargine) injection

Do not use Toujeo if you have low blood sugar or if you are allergic to insulin or any of the ingredients in Toujeo.

Please see full Important Safety Information for Toujeo throughout. Please [click here](#) or visit <https://products.sanofi.us/toujeo/toujeo.pdf> for full Prescribing Information for Toujeo.



Toujeo®

insulin glargine injection 300 Units/mL

Important Safety Information for Toujeo U-300 (insulin glargine) injection (cont'd)

Do not share your pen(s) with other people, even if the needle has been changed. You may give other people a serious infection or get a serious infection from them.

Before starting Toujeo, tell your doctor about all your medical conditions, including if you have liver or kidney problems, if you are pregnant or planning to become pregnant, or if you are breastfeeding or planning to breastfeed.

Change (rotate) your injection sites within the area you chose with each dose to reduce your risk of getting pitted or thickened skin (lipodystrophy) and skin with lumps (localized cutaneous amyloidosis) at the injection sites. **Do not** use the same spot for each injection or inject where the skin is pitted, thickened, lumpy, tender, bruised, scaly, hard, scarred, or damaged.

Heart failure can occur if you are taking insulin together with pills called TZDs (thiazolidinediones), even if you have never had heart failure or other heart problems. If you have heart failure, it may get worse while you take TZDs with Toujeo. Your treatment with TZDs and Toujeo may need to be changed or stopped by your doctor if you have new or worsening heart failure. Tell your doctor if you have any new or worsening symptoms including:

- Shortness of breath
- Sudden weight gain
- Swelling of your ankles or feet

Tell your doctor about all the medications you take, including OTC medicines, vitamins, and supplements, and herbal supplements.

Toujeo should be taken at the same time once a day. Test your blood sugar levels daily while using any insulin. Do not change your dose or type of insulin without talking to your doctor. Verify you have the correct insulin before each injection. **Do NOT use a syringe to remove Toujeo from your pen.** Your dose for Toujeo may be different from other insulins you have taken. Any change of insulin should be made cautiously and only under medical supervision.

Do NOT dilute or mix Toujeo with any other insulin or solution. It will not work as intended and you may lose blood sugar control, which could be serious. Use Toujeo only if the solution is clear and colorless with no particles visible.

While using Toujeo, do not drive or operate heavy machinery until you know how Toujeo affects you. Don't drink alcohol or use other medicines that contain alcohol.

The most common side effect of Toujeo is low blood sugar (hypoglycemia), which may be serious and life-threatening. Severe hypoglycemia may cause harm to your heart or brain. Symptoms of serious low blood sugar may include shaking, sweating, fast heartbeat, and blurred vision. The long-acting effect of Toujeo may delay recovery from low blood sugar compared to shorter-acting insulins.

Toujeo may cause severe allergic reactions that can lead to death. Get medical help right away if you have:

- A rash over your whole body
- Shortness of breath
- Swelling of your face, tongue, or throat
- Extreme drowsiness, dizziness, or confusion
- Trouble breathing
- Fast heartbeat
- Sweating


Toujeo may have additional side effects including swelling, weight gain, low potassium, and injection site reactions which may include change in fat tissue, skin thickening, redness, swelling, and itching.

Toujeo SoloStar and Toujeo Max SoloStar are single-patient-use prefilled insulin pens. It is important to perform a safety test when using a new pen for the first time. Talk to your doctor about proper injection technique and follow instructions in the *Instruction Leaflet* that comes with your Toujeo SoloStar or Toujeo Max SoloStar pen.

Please see full Important Safety Information for Toujeo throughout. Please [click here](https://products.sanofi.us/toujeo/toujeo.pdf) or visit <https://products.sanofi.us/toujeo/toujeo.pdf> for full Prescribing Information for Toujeo.

YOUR INJECTION GUIDE FOR GETTING STARTED


Toujeo®
Max SoloStar®
insulin glargine injection 300 Units/mL


Toujeo®
insulin glargine injection 300 Units/mL



What is Toujeo U-300 (insulin glargine) injection 300 Units/mL?

Prescription Toujeo is a long-acting man-made insulin used to control high blood sugar in adults and children who are 6 years of age and older with diabetes mellitus.

- Toujeo is not for the treatment of diabetic ketoacidosis
- It is not known if Toujeo is safe and effective in children under 6 years of age

Please read the Instructions for Use that come with your pen
or [click here for full Prescribing Information](#) including Instructions for Use.



MEET TOUJEO MAX

The Toujeo® Max SoloStar® pen is the only pen that holds 900 units of insulin in the same-size pen. That's more units of insulin than any standard long-acting insulin pen available.

Toujeo® Max SoloStar®
insulin glargine injection 300 Units/mL

Maximum dose:
160 units per injection

Adjust your dose in:
2-unit increments

Units per pen:
900



FEWER PENS

Toujeo is the most concentrated longer-acting insulin with **the lowest injection volume**. Each unit of insulin is smaller, so you inject less liquid with your prescribed dose. That, plus a 900-unit pen, could mean you use fewer pens.



FEWER REFILLS

The Max SoloStar pen holds more units of insulin than any other long-acting pen, so you may need to refill your prescription less often.



FEWER CO-PAYS

If you're using fewer insulin pens, you may have fewer refills and associated co-pays depending on daily dose and prescription insurance coverage. Find out more [here](#).

The Max SoloStar pen is recommended for patients who need at least 20 units of insulin per day.

Important Safety Information for Toujeo U-300 (insulin glargine) injection

Do not use Toujeo if you have low blood sugar or if you are allergic to insulin or any of the ingredients in Toujeo.

Please see full Important Safety Information for Toujeo throughout. Please [click here](#) or visit <https://products.sanofi.us/toujeo/toujeo.pdf> for full Prescribing Information for Toujeo.

ONE MEDICINE—TWO INSULIN PEN OPTIONS

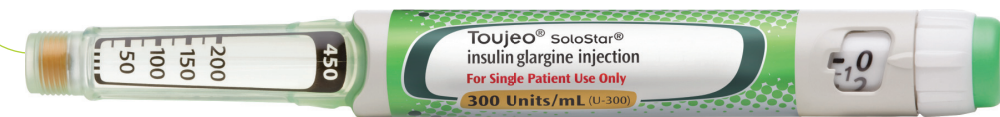
Both pen options contain the same medicine and use the smallest needle made for insulin pens.

Toujeo® SoloStar®
insulin glargine injection 300 Units/mL

Maximum dose:
80 units per injection

Adjust your dose in:
1-unit increments

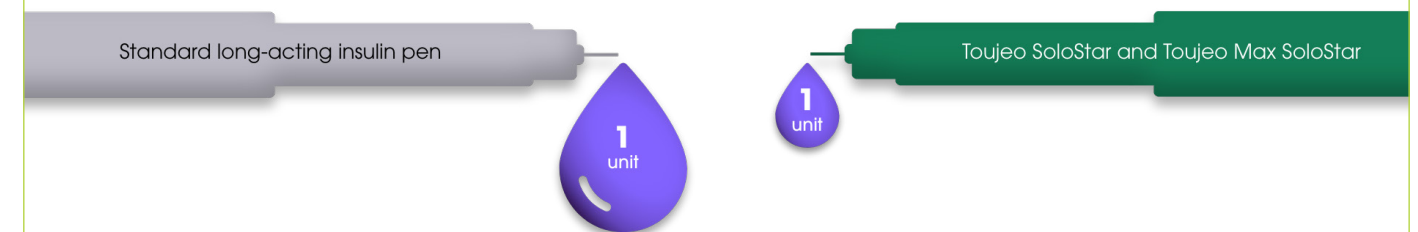
Units per pen:
450



KEY SHARED FEATURES:

- Same pen size
- 5-second hold time

BOTH PENS HAVE THE LOWEST INJECTION VOLUME COMPARED TO A UNIT OF ANY STANDARD LONG-ACTING INSULIN*



*One unit of Toujeo has the smallest injection volume compared to one unit of any standard long-acting insulin. Enlarged to show proportions.



Can be stored unrefrigerated for 8 weeks after first use. Once opened, store at room temperature (up to 86°F).

Toujeo® Max SoloStar®
insulin glargine injection 300 Units/mL

Toujeo®
insulin glargine injection 300 Units/mL

BEFORE INJECTING

Working with your doctor, decide which pen works best for you. Then set your goals and use this chart to write them down or download the chart [here](#).

1. This is my starting dose of Toujeo: _____
2. I need to adjust it by _____ unit(s) every _____ day(s) or as indicated by my doctor: _____.
3. Continue until my glucose levels reach _____ before morning meals.



Scan the QR code to watch a video with additional instructions. Amy, an actual Toujeo patient, demonstrates how to use the Toujeo SoloStar and Toujeo Max SoloStar pens. Find out more at www.toujeo.com/how-to-use-toujeo-insulin



Important Safety Information for Toujeo U-300 (insulin glargine) injection (cont'd)

Do not share your pen(s) with other people, even if the needle has been changed. You may give other people a serious infection or get a serious infection from them.

Before starting Toujeo, tell your doctor about all your medical conditions, including if you have liver or kidney problems, if you are pregnant or planning to become pregnant, or if you are breastfeeding or planning to breastfeed.

Please see full Important Safety Information for Toujeo throughout. Please [click here](https://products.sanofi.us/toujeo/toujeo.pdf) or visit <https://products.sanofi.us/toujeo/toujeo.pdf> for full Prescribing Information for Toujeo.

IN CASE OF HYPOGLYCEMIA, THIS IS MY PLAN:



Hypoglycemia, also known as low blood sugar, is when your levels fall below 70 mg/dL. Make sure my family and I are aware of common low blood sugar symptoms, like:

- Shaking
- Sweating
- Fast heartbeat
- Blurred vision

IF I FEEL ANY OF THESE, I NEED TO:

Check my blood sugar!

If it's below 70 mg/dL or if I can't check it immediately:

- Eat or drink something high in sugar, like 4 oz fruit juice (orange, apple, etc)
- 1 tablespoon honey, corn syrup, or sugar
- Hard candy

Then in 15 minutes, check my blood sugar again.

If it's still low, eat or drink something again.

And after 15 minutes, test your blood again.

It is important to discuss with your doctor when developing a plan for hypoglycemia.

Please see Important Safety Information and accompanying link to the Full Prescribing Information.

Here are my target blood sugar ranges:

Fasting/before meals: _____ mg/dL to _____ mg/dL.

2 hours after meals: Less than _____ mg/dL.

Tracking my A1C levels:

My A1C level is: _____ DATE: _____

My A1C goal is: _____ DATE: _____

A1C REDUCTION MEETS STABLE BLOOD SUGAR CONTROL WITH ONCE-DAILY TOUJEO

Say hello to once-daily Toujeo, a longer-acting insulin that in clinical studies has been shown to help maintain blood sugar levels in the American Diabetes Association (ADA) target zone (80-130 mg/dL) for up to 36 hours.

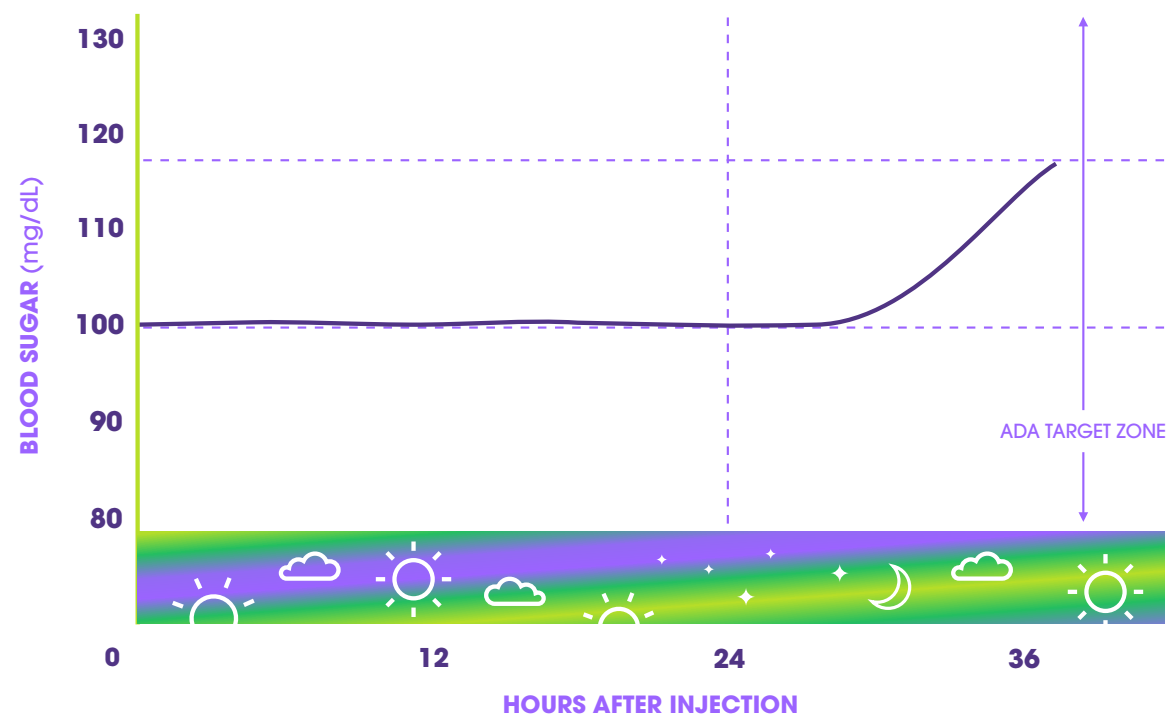
PROVEN A1C REDUCTION

Toujeo provides proven A1C reduction



STABLE BLOOD SUGAR LEVELS AROUND THE CLOCK

In a study, blood sugar levels stayed within the American Diabetes Association target zone for more than 24 hours.*



Toujeo should be taken at the same time every day, once a day.

Results based on a study of 30 patients with type 2 diabetes; study size is typical for this type of study. May not apply in everyday use. Target zone: 80-130 mg/dL.

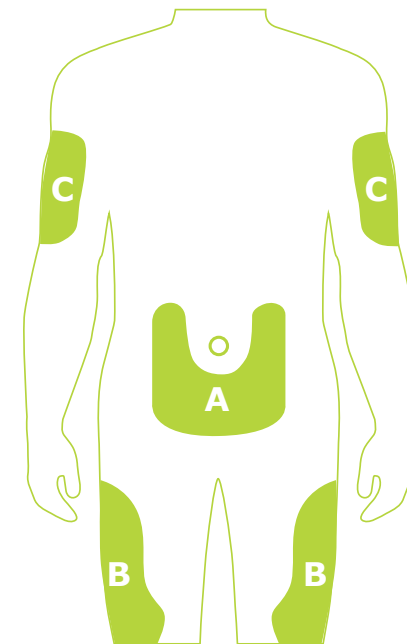
For all insulins, including Toujeo, the most common side effect is hypoglycemia. Ask your doctor about the signs and symptoms of hypoglycemia, how to monitor your blood sugar, and what to do if you have a hypoglycemic event.

These are not all the possible side effects of Toujeo. Talk with your doctor about possible side effects. For more detailed information, see the full Important Safety Information and Full Prescribing Information.

Please see full Important Safety Information for Toujeo throughout. Please [click here](https://products.sanofi.us/toujeo/toujeo.pdf) or visit <https://products.sanofi.us/toujeo/toujeo.pdf> for full Prescribing Information for Toujeo.

INJECTION ZONES

Toujeo should be injected under the skin (subcutaneously). Do not use Toujeo in an insulin pump or inject Toujeo into your vein (intravenously).



- A: STOMACH**
Inject anywhere except within 2 inches around your belly button.
- B: THIGHS**
Avoid injecting too close to the bony area above your knee.
- C: UPPER ARMS**
Inject in the soft area on the backside of your upper arm.

Change (rotate) your injection sites with each dose to reduce your risk of getting lipodystrophy (pitted or thickened skin) and localized cutaneous amyloidosis (skin with lumps) at the injection sites. Do not use the same spot for each injection or inject where the skin is pitted, thickened, lumpy, tender, bruised, scaly, hard, scarred, or damaged. Remember not to share your pen(s) with other people, even if the needle has been changed.

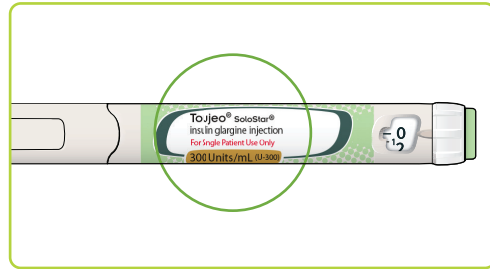
KEY POINTS TO REMEMBER:

- Check your pen to make sure it's the correct one (Max SoloStar or SoloStar)
- Always attach a new needle prior to dialing a dose
- Always perform a safety test on a new pen and before every injection to ensure the pen and needle are working
- If your pen is damaged or not working properly, don't use it
- Always carry a spare pen and spare needles in case they are lost or stop working
- Never inject into a vein or reuse needles
- Change (rotate) where you inject each time as your doctor instructs

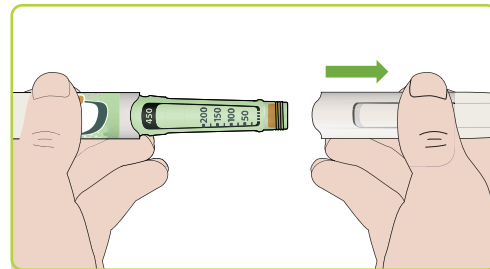


1 PREP YOUR PEN

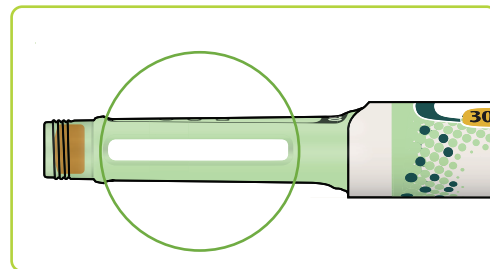
First, take your new pen out of the fridge at least 1 hour before use. (Cold insulin may be more painful to inject.)



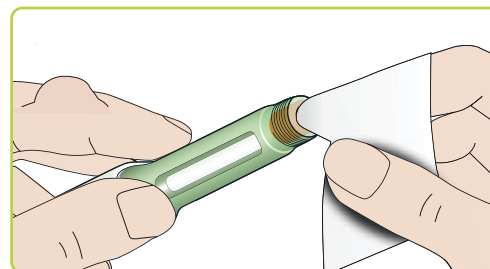
A. Double check to make sure it's the correct pen. In case you have multiple pens—for diabetes or other conditions—check the name and expiration date on your pen to be sure you've got the right one. Do not use your pen after the expiration date printed on the label.



B. Start off with clean hands, then remove the cap and make sure the insulin is clear. Don't use the pen if the insulin looks cloudy, colored, or contains particles.



C. If you see air bubbles inside the window, don't worry, it's normal.

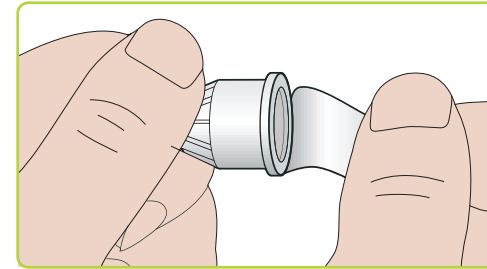


D. Wipe the rubber seal with an alcohol swab.

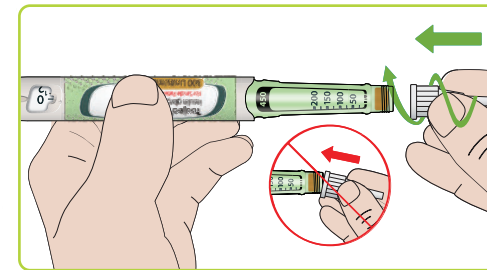
Please see full Important Safety Information for Toujeo throughout. Please [click here](https://products.sanofi.us/toujeo/toujeo.pdf) or visit <https://products.sanofi.us/toujeo/toujeo.pdf> for full Prescribing Information for Toujeo.

2 ATTACH A NEW NEEDLE

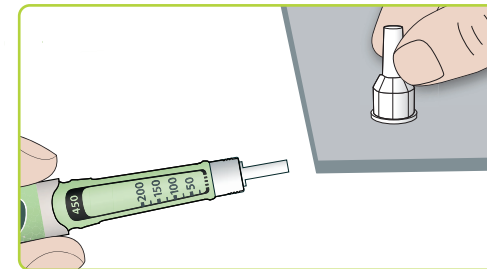
You'll notice when you open your new pen, there's no needle. Attach a new one, and do so again every time you inject. Never reuse needles, and always use needles* from BD (such as BD Ultra-Fine®), Ypsomed (such as Clickfine®), or Owen Mumford (such as Unifine® Pentips®).



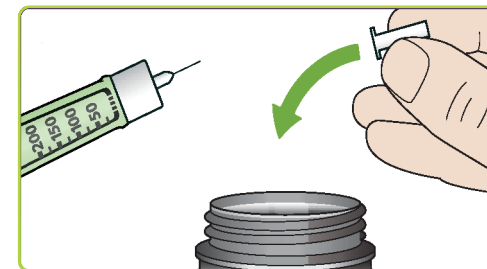
A. Take a new needle and peel off the protective seal. Be careful when you are handling needles to help prevent accidental needle-stick injury. You may give other people a serious infection, or get a serious infection from them.



B. Hold the needle straight and screw it on—but don't over-tighten.



C. Pull off the outer needle cap and keep it for later when removing the needle.

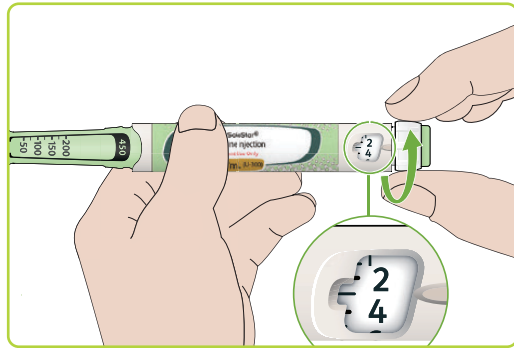


D. Then pull off the inner needle cap and throw it away.

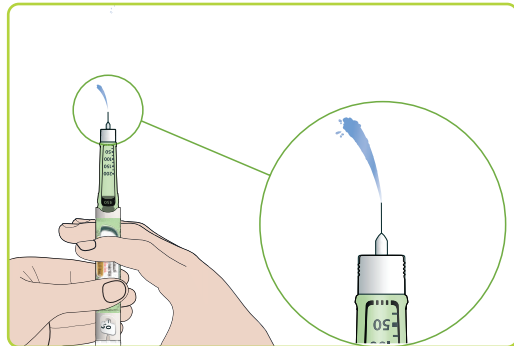
*Other brands listed are the registered trademarks of their respective owners and are not trademarks of sanofi-aventis U.S. LLC.

3 DO A SAFETY CHECK

OK, this is really important: **Always perform a safety test before each injection.**



- A.** **Max SoloStar:** Select 4 units by turning the dose selector until the dose pointer is at 4.
SoloStar: Select 3 units by turning the dose selector until the dose pointer is between 2 and 4.



- B.** Then press the injection button all the way in. When insulin comes out of the needle tip, your pen is working correctly.

If no insulin comes out, repeat step B above a few times. If no insulin appears after 3 to 6 tries, depending on the pen you have, change the needle and try again. Still no insulin coming out? The pen might be damaged, so use a new one. **Note: Never use a syringe to remove insulin from your pen.**

Important Safety Information for Toujeo U-300 (insulin glargine) injection (cont'd)

Change (rotate) your injection sites within the area you chose with each dose to reduce your risk of getting pitted or thickened skin (lipodystrophy) and skin with lumps (localized cutaneous amyloidosis) at the injection sites. **Do not** use the same spot for each injection or inject where the skin is pitted, thickened, lumpy, tender, bruised, scaly, hard, scarred, or damaged.

Please see full Important Safety Information for Toujeo throughout. Please [click here](https://products.sanofi.us/toujeo/toujeo.pdf) or visit <https://products.sanofi.us/toujeo/toujeo.pdf> for full Prescribing Information for Toujeo.

4 SELECT YOUR DOSE

You'll notice dose unit increments vary by pen.

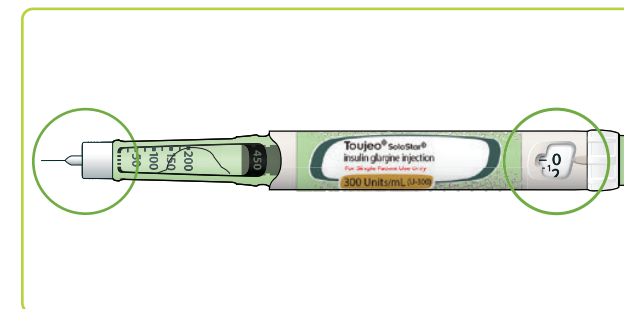


Dose is adjusted in **2-unit** increments on the dose selector dial



Dose is adjusted in **1-unit** increments on the dose selector dial

FOR BOTH THE MAX SOLOSTAR AND SOLOSTAR PENS:



- A.** Make sure a needle is attached, and the dose is set to "0". Then turn the dose selector until it lines up with your dose. If you turn past it, turn back. Make sure the window shows your prescribed dose.

When using the pens, do not dial your dose by counting the clicks. You may dial the wrong dose.

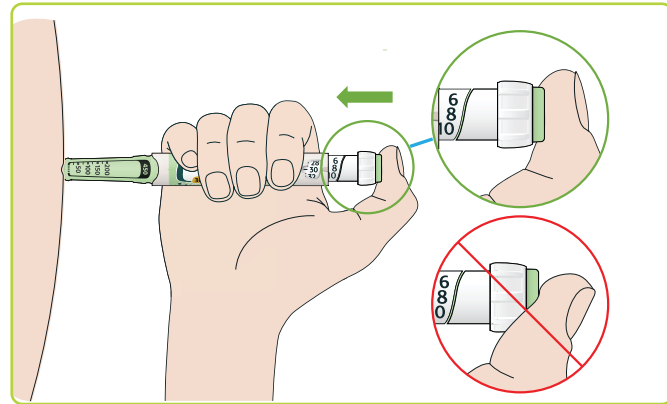
People who have vision problems should not use these pens without help from a person trained to use them.



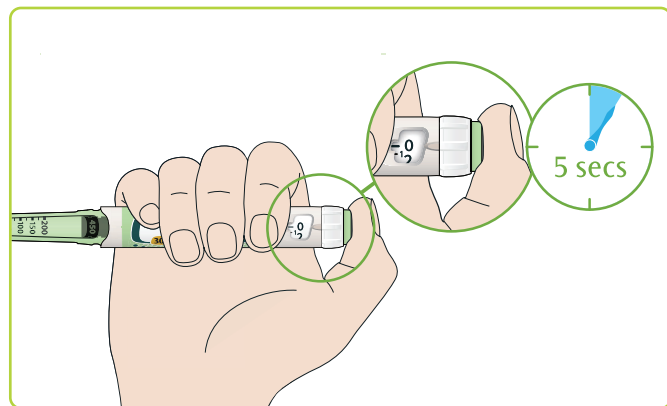
- B.** If there aren't enough units left for your full dose, the selector will stop at however many units are left. So you may need to do a 2nd injection to get your full dose. **To prevent jamming, don't play with or press the dial before use.**

5 INJECTION TIME

Choose a place to inject (Injection Zones shown on page 7) and wipe it clean with an alcohol swab before injecting.



A. Keeping the pen straight, push the needle into your skin. **Do not** touch the injection button yet. Place your thumb on the injection button, then press all the way in and hold. Do not press at an angle; you don't want your thumb to block the dose selector from turning.



B. When you see "0" in the dose window, slowly count to 5 to ensure you get the full dose. Then release the injection button and remove the needle from your skin. You're done with the injection part!

A REMINDER ABOUT FINDING YOUR DOSE:

Whether you're new to insulin or already on it, your dose may be adjusted over time until your doctor finds the dose of Toujeo that's right for you.

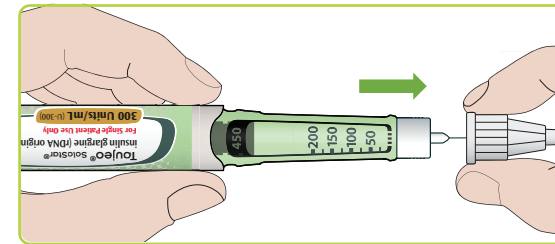
Since everyone's diabetes is different, sometimes it just takes a bit of fine-tuning based on your needs.



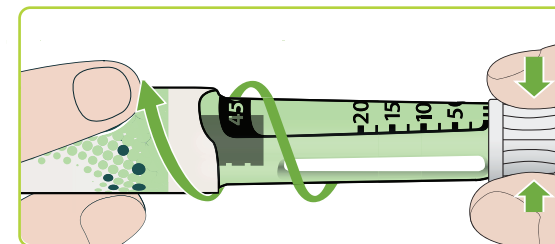
Please see full Important Safety Information for Toujeo throughout. Please [click here](https://products.sanofi.us/toujeo/toujeo.pdf) or visit <https://products.sanofi.us/toujeo/toujeo.pdf> for full Prescribing Information for Toujeo.

6 DISPOSE OF THE NEEDLE

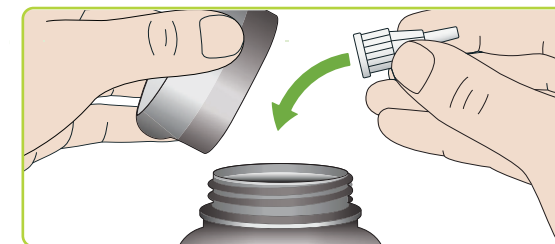
Remember the outer needle cap you placed aside earlier? It's designed to remove the needle too, so grab that now.



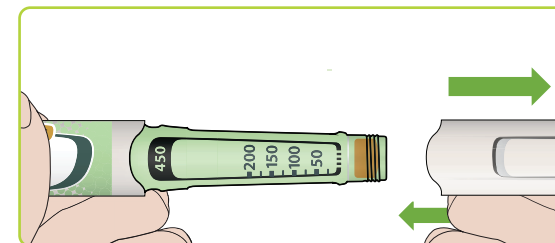
A. Place the cap back over the needle, then push firmly. (Careful: the needle can puncture the cap if recapped at an angle.)



B. Now hold the cap firmly while using your other hand to unscrew the pen until it separates from the needle.



C. Put the used needle into a "sharps" container or empty plastic bottle. (There is more information on sharps containers and disposing of needles in your Instruction Leaflet.)



D. Replace the cap to protect your pen until your next injection. **Do not** put the pen back in the refrigerator. Keep your pen at room temperature below 86°F (30°C) for up to 56 days after its first use.

NEED HELP?

If you have any questions about your pen or about diabetes, ask your healthcare provider, go to www.Toujeo.com, or call Sanofi-Aventis at **1-800-633-1610**.



QUICK TIPS

ON STORING YOUR TOUJEO SOLOSTAR AND TOUJEO MAX SOLOSTAR PENS

BEFORE OPENING:



Store your pen in the refrigerator between 36°F and 46°F (2°C and 8°C) in the box provided. And keep the pen cap on!



Never freeze your pen. Once it has been frozen, it cannot be used.



Your pen can remain refrigerated until the expiration date.



Discard pens after the expiration date.



PAY NO MORE THAN \$35 IN CO-PAYS*

Have insurance? Be sure to download your co-pay savings card.

Don't have insurance? Sanofi offers the Valyou Savings Program that provides eligible patients with a prescription cost of \$35.* Find out more about both programs [here](#).

*See Eligibility Restrictions and Offer Terms on back page.

Important Safety Information for Toujeo U-300 (insulin glargine) injection (cont'd)

Heart failure can occur if you are taking insulin together with pills called TZDs (thiazolidinediones), even if you have never had heart failure or other heart problems. If you have heart failure, it may get worse while you take TZDs with Toujeo. Your treatment with TZDs and Toujeo may need to be changed or stopped by your doctor if you have new or worsening heart failure. Tell your doctor if you have any new or worsening symptoms including:

- Shortness of breath
- Sudden weight gain
- Swelling of your ankles or feet

Please see full Important Safety Information for Toujeo throughout. Please [click here](#) or visit <https://products.sanofi.us/toujeo/toujeo.pdf> for full Prescribing Information for Toujeo.

THINGS TO REMEMBER

WHEN YOU ARE READY TO STORE YOUR TOUJEO SOLOSTAR OR TOUJEO MAX SOLOSTAR PEN AFTER USING

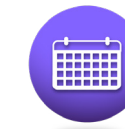
AFTER USING:



Make sure your pen stays below 86°F (30°C). And, never put your pen back in the fridge once it has been opened.



Keep your pen out of direct heat and light.



If it has been 56 days since the first use, dispose of the pen properly. Even if there is still insulin inside.

KEY POINTS TO REMEMBER:

- Never use beyond the expiration date printed on the label
- Never use if insulin is cloudy, colored, or has particles in it
- Never store your pen with the needle attached
- Never share your pen with other people, even if the needle has been changed



SAFETY TIPS FOR DISPOSING OF USED NEEDLES

Remember to attach a new needle every time you inject. Never reuse the needles. After each injection, it is important to dispose of the needles safely. Here's how:



Place the used needles (known as "sharps") in a sharps container, which can be bought at a local drugstore.



Needles can be dangerous, so make sure to follow community guidelines for proper disposal. And never place them in the trash, recyclables, toilet, or down a sewer drain.

WHERE TO GET RID OF YOUR SHARPS CONTAINER

- Most doctors' offices, hospitals, pharmacies, health departments, or fire stations can collect sharps containers
- Ask your doctor or pharmacist about other locations
- Visit [SafeNeedleDisposal.org](https://www.safeneedledisposal.org) or [fda.gov/safesharpsdisposal](https://www.fda.gov/safesharpsdisposal)

GET MORE SUPPORT AT TEAMINGUP

There's a lot to think about when you live with diabetes. What you eat, how you exercise, and creating a routine are all essential to managing your diabetes well. It takes a plan.

At TeamingUp you'll find resources and tips so you can create a plan that's right for you.

- **VIDEOS**

Hear from peers about how they created a way to live fully with their diabetes

- **EXERCISE**

Hear from experts on how exercise helps with managing your diabetes

- **EATING**

From meal planning to delicious recipes, learn how diet plays an important part in managing your diabetes

- **TEAM COACHES** and champions to help you at every phase of your diabetes management



Get support at [TeamingUp](#) to help manage your diabetes and more. Learn how to plan and cook delicious meals, create exercise routines, and more. You can also use your phone to scan the code.



Please see full Important Safety Information for Toujeo throughout. Please [click here](#) or visit <https://products.sanofi.us/toujeo/toujeo.pdf> for full Prescribing Information for Toujeo.

Important Safety Information for Toujeo U-300 (insulin glargine) injection (cont'd)

Tell your doctor about all the medications you take, including OTC medicines, vitamins, and supplements, and herbal supplements.

Toujeo should be taken at the same time once a day. Test your blood sugar levels daily while using any insulin. Do not change your dose or type of insulin without talking to your doctor. Verify you have the correct insulin before each injection. **Do NOT use a syringe to remove Toujeo from your pen.** Your dose for Toujeo may be different from other insulins you have taken. Any change of insulin should be made cautiously and only under medical supervision.

Do NOT dilute or mix Toujeo with any other insulin or solution. It will not work as intended and you may lose blood sugar control, which could be serious. Use Toujeo only if the solution is clear and colorless with no particles visible.

While using Toujeo, do not drive or operate heavy machinery until you know how Toujeo affects you. Don't drink alcohol or use other medicines that contain alcohol.

The most common side effect of Toujeo is low blood sugar (hypoglycemia), which may be serious and life-threatening. Severe hypoglycemia may cause harm to your heart or brain. Symptoms of serious low blood sugar may include shaking, sweating, fast heartbeat, and blurred vision. The long-acting effect of Toujeo may delay recovery from low blood sugar compared to shorter-acting insulins.

Toujeo may cause severe allergic reactions that can lead to death. Get medical help right away if you have:

- A rash over your whole body
- Shortness of breath
- Swelling of your face, tongue, or throat
- Extreme drowsiness, dizziness, or confusion
- Trouble breathing
- Fast heartbeat
- Sweating

Toujeo may have additional side effects including swelling, weight gain, low potassium, and injection site reactions which may include change in fat tissue, skin thickening, redness, swelling, and itching.

Toujeo SoloStar and Toujeo Max SoloStar are single-patient-use prefilled insulin pens. It is important to perform a safety test when using a new pen for the first time. Talk to your doctor about proper injection technique and follow instructions in the *Instruction Leaflet* that comes with your Toujeo SoloStar or Toujeo Max SoloStar pen.

Please see Full Important Safety Information for Toujeo throughout. Please [click here](#) or visit <https://products.sanofi.us/toujeo/toujeo.pdf> for Full Prescribing Information for Toujeo.

***Eligibility Restrictions & Offer Terms:**

Insulins Valyou Savings Program: This savings program is not insurance. For a complete list of participating brands, products, and National Drug Codes (NDCs) [Click Here](#). This offer is not valid for prescriptions covered by or submitted for reimbursement, in whole or in part, under Medicare, Medicaid, VA, DOD, TRICARE, similar federal or state programs, including any state pharmaceutical programs, or commercial/private insurance. Only patients without prescription medication insurance can apply for this offer. Void where prohibited by law. For the duration of the program, eligible cash paying patients will pay \$35 per 30 Day Supply. To pay \$35 per 30 Day Supply, you must fill all your Sanofi Insulin prescriptions at the same time, together each month. The Insulins Valyou Savings Program applies to the cost of medication. There are other relevant costs associated with overall treatment. Sanofi reserves the right to rescind,

revoke, terminate, or amend this offer, eligibility, and terms of use at any time without notice. Upon registration, patients will receive all program details. For questions regarding your eligibility or benefits, or if you wish to discontinue your participation, call the Insulins Valyou Savings Program at (833) 813-0190 (8:00 am-8:00 pm EST, Monday-Friday).

Sanofi Insulins Co-pay Savings Program: This savings program is not insurance. For a complete list of participating brands, products, and National Drug Codes (NDCs) [Click Here](#). This offer is not valid for prescriptions covered by or submitted for reimbursement, in whole or in part, under Medicare, Medicaid, VA, DOD, TRICARE, similar federal or state programs, including any state pharmaceutical programs. If you have an Affordable Care (Health Care Exchange) plan, you may still be qualified to receive and use this savings card. Please note: the Federal Employees Health Benefits (FEHB) Program is not a federal or state government health care program for purposes of the savings program. Void where prohibited by law. For the duration of the program, eligible commercially insured patients pay no more than \$35 per 30-day supply, up to 10 packs per fill; Offer valid for one fill every 30 days. Savings may vary depending on patients' out-of-pocket costs. The Sanofi Insulins Co-pay Savings Program applies to the cost of medication. There are other relevant costs associated with overall treatment. Sanofi reserves the right to rescind, revoke, terminate, or amend this offer, eligibility, and terms of use at any time without notice. Upon registration, patients will receive all program details. For questions regarding your eligibility or benefits, or if you wish to discontinue your participation, call the Sanofi Insulins Co-pay Savings Program at (866) 255-8661 (8:00 am-8:00 pm EST, Monday-Friday).

MAT-US-2302910-v2.0-11/2023

© 2023 sanofi-aventis US LLC.

All rights reserved.

WHAT TO UNDERSTAND WHEN YOU START ON TOUJEO®

(insulin glargine) injection 300 Units/mL



Welcome to Toujeo! Whether you've just started treatment or just want to know what starting with Toujeo is like, you've come to the right place. This handy guide provides information about Toujeo, how it may help, and what to keep an eye on when you start.



HOW TAKING TOUJEO MAY HELP

Your doctor has prescribed Toujeo, a longer-acting insulin, to help control your blood sugar levels. Sugar is what provides your body with energy. However, sugar cannot enter most of the cells in your body directly. Insulin is the key that unlocks cells for sugar to enter and deliver the right amount of energy they need. Normally, the pancreas creates insulin to help the body use blood sugar as energy.

If you have type 2 diabetes, your pancreas does not produce enough insulin, or your body can't properly use the insulin it produces to keep your blood sugar under control.

If you have type 1 diabetes, your pancreas doesn't produce any insulin at all and requires insulin therapy.

Your doctor will work to find the right dose for you and your diabetes. Dose adjustments, or titration, are a normal part of the process.



What is Toujeo U-300 (insulin glargine) injection 300 Units/mL?

Prescription Toujeo is a long-acting man-made insulin used to control high blood sugar in adults and children who are 6 years of age and older with diabetes mellitus.

- Toujeo is not for the treatment of diabetic ketoacidosis
- It is not known if Toujeo is safe and effective in children under 6 years of age

Important Safety Information for Toujeo U-300 (insulin glargine) injection

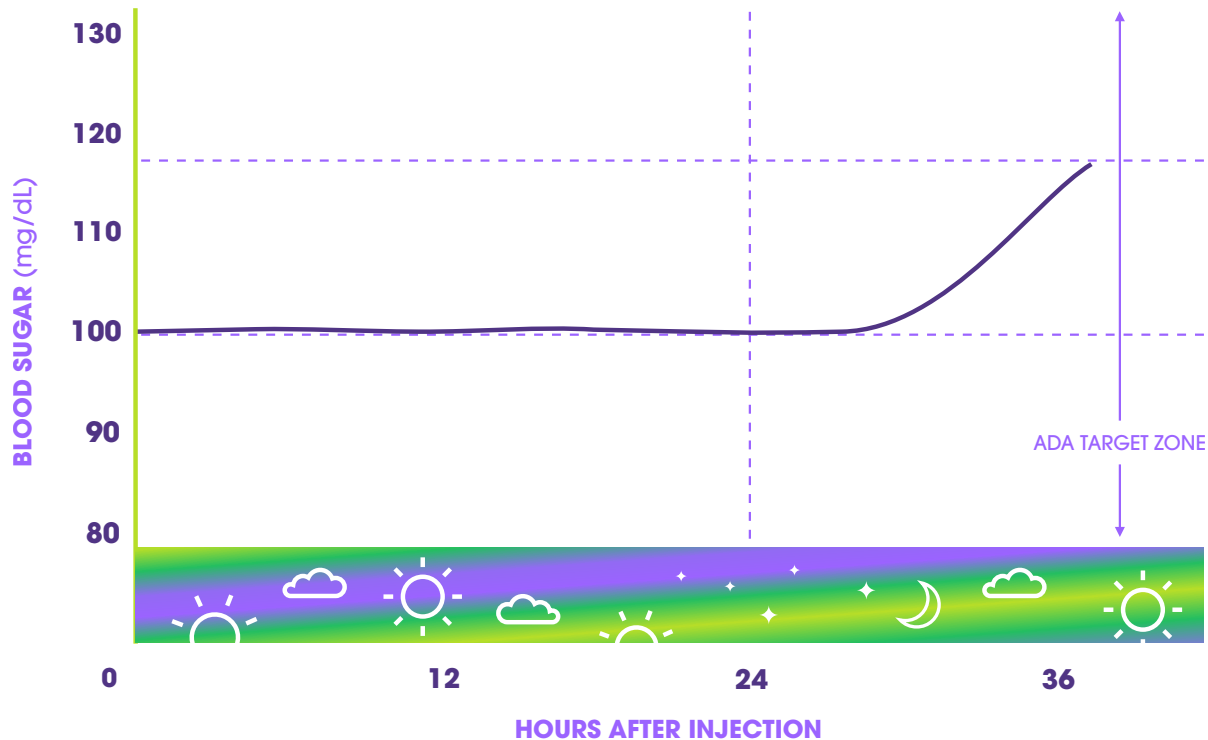
Do not use Toujeo if you have low blood sugar or if you are allergic to insulin or any of the ingredients in Toujeo.

Please see full Important Safety Information for Toujeo throughout. Please [click here](#) or visit <https://products.sanofi.us/toujeo/toujeo.pdf> for full Prescribing Information for Toujeo.

TOUJEO IS PROVEN TO:

- Reduce A1C
- Provide stable blood sugar control all day and all night

In a study, blood sugar levels stayed within the American Diabetes Association (ADA) target zone for more than 24 hours.*



Toujeo should be taken at the same time every day, once a day.

Results based on a study of 30 patients with type 2 diabetes; study size is typical for this type of study. May not apply in everyday use. Target zone: 80-130 mg/dL.

*American Diabetes Association. *Diabetes Care*. 2022;45(Suppl1):S83-S96.

WHAT IS 'TIME IN RANGE'?

Time in range (TIR) is the amount of time your blood sugar levels stay within a healthy range. It may help your doctor know how well your treatment is working.

Important Safety Information for Toujeo U-300 (insulin glargine) injection (cont'd)

Do not share your pen(s) with other people, even if the needle has been changed. You may give other people a serious infection or get a serious infection from them.

Before starting Toujeo, tell your doctor about all your medical conditions, including if you have liver or kidney problems, if you are pregnant or planning to become pregnant, or if you are breastfeeding or planning to breastfeed.

Please see full Important Safety Information for Toujeo throughout. Please [click here](https://products.sanofi.us/toujeo/toujeo.pdf) or visit <https://products.sanofi.us/toujeo/toujeo.pdf> for full Prescribing Information for Toujeo.

HYPOGLYCEMIA

WHAT IT IS AND WHAT YOU SHOULD DO

As with any medication, it's important to understand the possible side effects when taking Toujeo. For all insulins, including Toujeo, the most common side effect is hypoglycemia, also known as low blood sugar. This usually means your level has dropped below 70 mg/dL.



Some of the symptoms of hypoglycemia may include:

- Feeling cold
- Fast heartbeat
- Nausea
- Shakiness or dizziness
- Hunger
- Confusion

HYPOGLYCEMIA CAN OCCUR SUDDENLY

It is serious and you should take immediate action. Be sure to discuss a plan with your doctor on how to handle a hypoglycemic event.

Eat 15 grams of carbohydrates to raise your blood sugar. After 15 minutes, check your blood sugar level again. If it's still below 70 mg/dL, have another serving. Repeat these steps until your blood sugar reaches at least 70 mg/dL. Once you've reached that level, have a meal or snack to make sure it doesn't get too low again.

You should always have carbohydrate-rich snacks nearby so you can control an episode of hypoglycemia. Items that have approximately 15 grams of carbohydrates may include 4 ounces of fruit juice, hard candies, or glucose tablets.

Preventing and managing hypoglycemia is an important part of your treatment plan. Write down any episodes of hypoglycemia and share them with your doctor.



Important Safety Information for Toujeo U-300 (insulin glargine) injection (cont'd)

Change (rotate) your injection sites within the area you chose with each dose to reduce your risk of getting pitted or thickened skin (lipodystrophy) and skin with lumps (localized cutaneous amyloidosis) at the injection sites. **Do not** use the same spot for each injection or inject where the skin is pitted, thickened, lumpy, tender, bruised, scaly, hard, scarred, or damaged.

Heart failure can occur if you are taking insulin together with pills called TZDs (thiazolidinediones), even if you have never had heart failure or other heart problems. If you have heart failure, it may get worse while you take TZDs with Toujeo.

Please see full Important Safety Information for Toujeo throughout. Please [click here](https://products.sanofi.us/toujeo/toujeo.pdf) or visit <https://products.sanofi.us/toujeo/toujeo.pdf> for full Prescribing Information for Toujeo.

OTHER LESS COMMON SERIOUS SIDE EFFECTS

Toujeo may cause serious side effects, including severe allergic reactions. Seek immediate medical help if you experience any of the following:



- A rash over your whole body
- Shortness of breath
- Trouble breathing
- Swelling of the face, tongue, or throat
- Fast heartbeat
- Extreme drowsiness, dizziness, or confusion
- Sweating



These are not all the possible side effects of Toujeo. Talk with your doctor about possible side effects. For more detailed information, see the full Important Safety Information throughout and scan the QR code for full Prescribing Information.



Important Safety Information for Toujeo U-300 (insulin glargine) injection (cont'd)

Your treatment with TZDs and Toujeo may need to be changed or stopped by your doctor if you have new or worsening heart failure. Tell your doctor if you have any new or worsening symptoms including:

- Shortness of breath
- Sudden weight gain
- Swelling of your ankles or feet

Please see full Important Safety Information for Toujeo throughout. Please [click here](#) or visit <https://products.sanofi.us/toujeo/toujeo.pdf> for full Prescribing Information for Toujeo.

KNOW YOUR BLOOD SUGAR GOALS



There are two numbers that you should always know when taking insulin: your A1C and your blood sugar level. Ask your doctor what you should aim for with both and write them down.



Blood sugar, also known as blood glucose, is the amount of sugar in your blood at any given time. Most people should check their blood sugar level before and after meals and at bedtime, but your doctor will tell you exactly when you should. Download a blood sugar log [here](#).

1. My blood sugar goal:

Pre-meal _____ Post-meal _____

2. When I should check my blood sugar:

Fasting (morning) _____ Post-meal _____ Bedtime _____

A1C, also known as hemoglobin A1C, is your average blood sugar level over 2 to 3 months. This gives you and your doctor a better picture of how well your blood sugar is being controlled over time. Your A1C should be measured during doctor visits every few months.

3. My A1C goal: _____ DATE: _____

Important Safety Information for Toujeo U-300 (insulin glargine) injection (cont'd)

Tell your doctor about all the medications you take, including OTC medicines, vitamins, and supplements, and herbal supplements.

Toujeo should be taken at the same time once a day. Test your blood sugar levels daily while using any insulin. Do not change your dose or type of insulin without talking to your doctor. Verify you have the correct insulin before each injection. **Do NOT use a syringe to remove Toujeo from your pen.** Your dose for Toujeo may be different from other insulins you have taken. Any change of insulin should be made cautiously and only under medical supervision.

Please see full Important Safety Information for Toujeo throughout. Please [click here](#) or visit <https://products.sanofi.us/toujeo/toujeo.pdf> for full Prescribing Information for Toujeo.

WHAT ELSE?

A HELPFUL TIP FOR STORING TOUJEO



Store any unopened pens and cartons of Toujeo in the refrigerator. However, once opened, you can store Toujeo unrefrigerated for up to 56 days. Injecting insulin when it's at room temperature may be more comfortable than when cold.



Get support at [TeamingUp](#) to help you manage your diabetes. Learn how to plan and cook delicious meals, create exercise routines, and more. You can also scan this QR code.



PAY NO MORE THAN \$35 IN CO-PAYS†



Have insurance? Be sure to download your co-pay savings card.

Don't have insurance? Sanofi offers the Valyou Savings Program that provides users with a prescription cost of \$35.† Find out more about both programs [here](#).

†See Eligibility Restrictions and Offer Terms on the following page.

Important Safety Information for Toujeo U-300 (insulin glargine) injection (cont'd)

Do NOT dilute or mix Toujeo with any other insulin or solution. It will not work as intended and you may lose blood sugar control, which could be serious. Use Toujeo only if the solution is clear and colorless with no particles visible.

While using Toujeo, do not drive or operate heavy machinery until you know how Toujeo affects you. Don't drink alcohol or use other medicines that contain alcohol.

Please see full Important Safety Information for Toujeo throughout. Please [click here](#) or visit <https://products.sanofi.us/toujeo/toujeo.pdf> for full Prescribing Information for Toujeo.

Important Safety Information for Toujeo U-300 (insulin glargine) injection (cont'd)

The most common side effect of Toujeo is low blood sugar (hypoglycemia), which may be serious and life-threatening. Severe hypoglycemia may cause harm to your heart or brain. Symptoms of serious low blood sugar may include shaking, sweating, fast heartbeat, and blurred vision. The long-acting effect of Toujeo may delay recovery from low blood sugar compared to shorter-acting insulins.

Toujeo may cause severe allergic reactions that can lead to death. Get medical help right away if you have:

- A rash over your whole body
- Shortness of breath
- Swelling of your face, tongue, or throat
- Extreme drowsiness, dizziness, or confusion
- Trouble breathing
- Fast heartbeat
- Sweating

Toujeo may have additional side effects including swelling, weight gain, low potassium, and injection site reactions which may include change in fat tissue, skin thickening, redness, swelling, and itching.

Toujeo SoloStar and Toujeo Max SoloStar are single-patient-use prefilled insulin pens. It is important to perform a safety test when using a new pen for the first time. Talk to your doctor about proper injection technique and follow instructions in the *Instruction Leaflet* that comes with your Toujeo SoloStar or Toujeo Max SoloStar pen.

†Eligibility Restrictions & Offer Terms:

Insulins Valyou Savings Program: This savings program is not insurance. For a complete list of participating brands, products, and National Drug Codes (NDCs) [Click Here](#). This offer is not valid for prescriptions covered by or submitted for reimbursement, in whole or in part, under Medicare, Medicaid, VA, DOD, TRICARE, similar federal or state programs, including any state pharmaceutical programs, or commercial/private insurance. Only patients without prescription medication insurance can apply for this offer. Void where prohibited by law. For the duration of the program, eligible cash paying patients will pay \$35 per 30 Day Supply. To pay \$35 per 30 Day Supply, you must fill all your Sanofi Insulin prescriptions at the same time, together each month. The Insulins Valyou Savings Program applies to the cost of medication. There are other relevant costs associated with overall treatment. Sanofi reserves the right to rescind, revoke, terminate, or amend this offer, eligibility, and terms of use at any time without notice. Upon registration, patients will receive all program details. For questions regarding your eligibility or benefits, or if you wish to discontinue your participation, call the Insulins Valyou Savings Program at (833) 813-0190 (8:00 am-8:00 pm EST, Monday-Friday).

Sanofi Insulins Co-pay Savings Program: This savings program is not insurance. For a complete list of participating brands, products, and National Drug Codes (NDCs) [Click Here](#). This offer is not valid for prescriptions covered by or submitted for reimbursement, in whole or in part, under Medicare, Medicaid, VA, DOD, TRICARE, similar federal or state programs, including any state pharmaceutical programs. If you have an Affordable Care (Health Care Exchange) plan, you may still be qualified to receive and use this savings card. Please note: the Federal Employees Health Benefits (FEHB) Program is not a federal or state government health care program for purposes of the savings program. Void where prohibited by law. For the duration of the program, eligible commercially insured patients pay no more than \$35 per 30-day supply, up to 10 packs per fill; Offer valid for one fill every 30 days. Savings may vary depending on patients' out-of-pocket costs. The Sanofi Insulins Co-pay Savings Program applies to the cost of medication. There are other relevant costs associated with overall treatment. Sanofi reserves the right to rescind, revoke, terminate, or amend this offer, eligibility, and terms of use at any time without notice. Upon registration, patients will receive all program details. For questions regarding your eligibility or benefits, or if you wish to discontinue your participation, call the Sanofi Insulins Co-pay Savings Program at (866) 255-8661 (8:00 am-8:00 pm EST, Monday-Friday).

Please see full Important Safety Information for Toujeo throughout. Please [click here](#) or visit <https://products.sanofi.us/toujeo/toujeo.pdf> for full Prescribing Information for Toujeo.

BEFORE INJECTING INSULIN

Working with your doctor, decide which pen works best for you. Then set your goals. You can use this chart to write them down.

1. This is my starting dose of Toujeo: _____
2. I need to adjust it by _____ unit(s) every _____ day(s)
or as my doctor indicates: _____
3. Continue until my glucose levels reach _____ before morning meals.



IN CASE OF HYPOGLYCEMIA, THIS IS MY PLAN:

Make sure my family and I can recognize low blood sugar symptoms, including:

- Shaking
- Sweating
- Fast heartbeat
- Blurred vision

IF I FEEL ANY OF THESE, I NEED TO:

Check my blood sugar! If it's low or if I can't check it immediately:

- Eat or drink something high in sugar, like 4 oz fruit juice (orange, apple, etc)
- 1 tablespoon honey, corn syrup, or sugar
- Hard candy

Then in 15 minutes, check my blood sugar again. If it's still low, eat or drink some more carbohydrates (15 grams) and check my blood sugar again after 15 minutes. It is important to discuss with your doctor when developing a plan for hypoglycemia.

What is Toujeo U-300 (insulin glargine) injection 300 Units/mL?

Prescription Toujeo is a long-acting man-made insulin used to control high blood sugar in adults and children who are 6 years of age and older with diabetes mellitus.

- Toujeo is not for the treatment of diabetic ketoacidosis
- It is not known if Toujeo is safe and effective in children under 6 years of age

Important Safety Information for Toujeo U-300 (insulin glargine) injection

Do not use Toujeo if you have low blood sugar or if you are allergic to insulin or any of the ingredients in Toujeo.

Please see full Important Safety Information for Toujeo throughout. Please [click here](https://products.sanofi.us/toujeo/toujeo.pdf) or visit <https://products.sanofi.us/toujeo/toujeo.pdf> for full Prescribing Information for Toujeo.

BEFORE INJECTING INSULIN



Here are my target sugar ranges:

Fasting/before meals: _____ mg/dL to _____ mg/dL

Two hours after meals: Less than _____ mg/dL



Tracking my A1C levels:

My A1C level is: _____ DATE: _____

My A1C goal is: _____ DATE: _____

Important Safety Information for Toujeo U-300 (insulin glargine) injection (cont'd)

Do not share your pen(s) with other people, even if the needle has been changed. You may give other people a serious infection or get a serious infection from them.

Before starting Toujeo, tell your doctor about all your medical conditions, including if you have liver or kidney problems, if you are pregnant or planning to become pregnant, or if you are breastfeeding or planning to breastfeed.

Change (rotate) your injection sites within the area you chose with each dose to reduce your risk of getting pitted or thickened skin (lipodystrophy) and skin with lumps (localized cutaneous amyloidosis) at the injection sites. **Do not** use the same spot for each injection or inject where the skin is pitted, thickened, lumpy, tender, bruised, scaly, hard, scarred, or damaged.

Please see full Important Safety Information for Toujeo throughout. Please [click here](https://products.sanofi.us/toujeo/toujeo.pdf) or visit <https://products.sanofi.us/toujeo/toujeo.pdf> for full Prescribing Information for Toujeo.

Important Safety Information for Toujeo U-300 (insulin glargine) injection (cont'd)

Heart failure can occur if you are taking insulin together with pills called TZDs (thiazolidinediones), even if you have never had heart failure or other heart problems. If you have heart failure, it may get worse while you take TZDs with Toujeo. Your treatment with TZDs and Toujeo may need to be changed or stopped by your doctor if you have new or worsening heart failure. Tell your doctor if you have any new or worsening symptoms including:

- Shortness of breath
- Sudden weight gain
- Swelling of your ankles or feet

Tell your doctor about all the medications you take, including OTC medicines, vitamins, and supplements, and herbal supplements.

Toujeo should be taken at the same time once a day. Test your blood sugar levels daily while using any insulin. Do not change your dose or type of insulin without talking to your doctor. Verify you have the correct insulin before each injection. **Do NOT use a syringe to remove Toujeo from your pen.** Your dose for Toujeo may be different from other insulins you have taken. Any change of insulin should be made cautiously and only under medical supervision.

Do NOT dilute or mix Toujeo with any other insulin or solution. It will not work as intended and you may lose blood sugar control, which could be serious. Use Toujeo only if the solution is clear and colorless with no particles visible.

While using Toujeo, do not drive or operate heavy machinery until you know how Toujeo affects you. Don't drink alcohol or use other medicines that contain alcohol.

The most common side effect of Toujeo is low blood sugar (hypoglycemia), which may be serious and life-threatening. Severe hypoglycemia may cause harm to your heart or brain. Symptoms of serious low blood sugar may include shaking, sweating, fast heartbeat, and blurred vision. The long-acting effect of Toujeo may delay recovery from low blood sugar compared to shorter-acting insulins.

Toujeo may cause severe allergic reactions that can lead to death. Get medical help right away if you have:

- A rash over your whole body
- Shortness of breath
- Swelling of your face, tongue, or throat
- Extreme drowsiness, dizziness, or confusion
- Trouble breathing
- Fast heartbeat
- Sweating

Toujeo may have additional side effects including swelling, weight gain, low potassium, and injection site reactions which may include change in fat tissue, skin thickening, redness, swelling, and itching.

Toujeo SoloStar and Toujeo Max SoloStar are single-patient-use prefilled insulin pens. It is important to perform a safety test when using a new pen for the first time. Talk to your doctor about proper injection technique and follow instructions in the *Instruction Leaflet* that comes with your Toujeo SoloStar or Toujeo Max SoloStar pen.

Please see full Important Safety Information for Toujeo throughout. Please [click here](https://products.sanofi.us/toujeo/toujeo.pdf) or visit <https://products.sanofi.us/toujeo/toujeo.pdf> for full Prescribing Information for Toujeo.

WHAT YOU NEED TO KNOW ABOUT INSULIN



INSULIN: IT'S KEY TO BLOOD SUGAR CONTROL.

Understanding what insulin is and knowing about this hormone your body naturally produces can help. Here's where you'll find the basics about insulin and get answers to questions you may have.

ABOUT INSULIN



What is insulin?

Insulin is a hormone the pancreas makes to help your body use blood sugar for energy — or store it for later use.



What role does it play in your body?

The cells in your body need sugar for energy. But sugar cannot go into most of your cells directly, so that's where insulin comes in. Insulin helps keep your blood sugar levels from getting too high, which can be dangerous.

What is Toujeo U-300 (insulin glargine) injection 300 Units/mL?

Prescription Toujeo is a long-acting man-made insulin used to control high blood sugar in adults and children who are 6 years of age and older with diabetes mellitus.

- Toujeo is not for the treatment of diabetic ketoacidosis
- It is not known if Toujeo is safe and effective in children under 6 years of age

Important Safety Information for Toujeo U-300 (insulin glargine) injection

Do not use Toujeo if you have low blood sugar or if you are allergic to insulin or any of the ingredients in Toujeo.

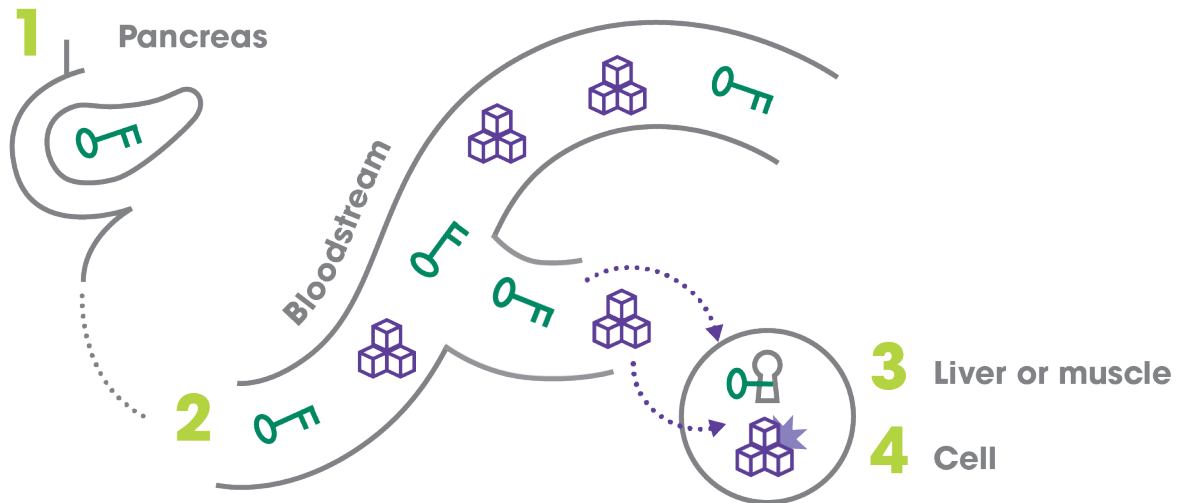
Please see full Important Safety Information for Toujeo throughout. Please [click here](https://products.sanofi.us/toujeo/toujeo.pdf) or visit <https://products.sanofi.us/toujeo/toujeo.pdf> for full Prescribing Information for Toujeo.

HEALTHY BLOOD SUGAR LEVELS

WHY IS INSULIN IMPORTANT?

When we eat, most of our food breaks down into its basic components. One of them is glucose (sugar), which runs into our bloodstream. Turning blood sugar into energy that our cells can use requires insulin.

Normally, just the right amount of insulin is released from the pancreas to help the body use or store the sugar it gets from food.



1 Pancreas releases insulin into the blood

2 Sugar and insulin travel through the blood

3 Insulin “unlocks” cells to help let sugar in

4 Sugar enters the cells and is turned into energy, or is stored in the liver and muscles for later use



Sugar



Insulin



Insulin receptor

Important Safety Information for Toujeo U-300 (insulin glargine) injection (cont'd)

Do not share your pen(s) with other people, even if the needle has been changed. You may give other people a serious infection or get a serious infection from them.

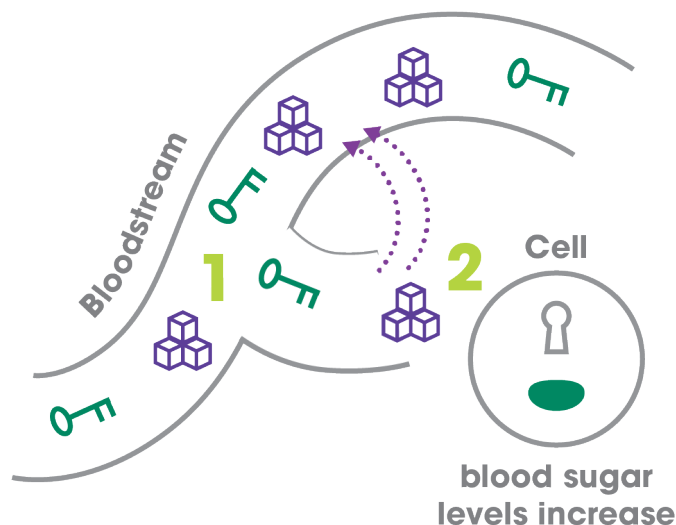
Please see full Important Safety Information for Toujeo throughout. Please [click here](https://products.sanofi.us/toujeo/toujeo.pdf) or visit <https://products.sanofi.us/toujeo/toujeo.pdf> for full Prescribing Information for Toujeo.

ABOUT TYPE 2 DIABETES

WHAT IS TYPE 2 DIABETES?

For people with type 2 diabetes, the pancreas does not produce enough insulin or the body can't properly use the insulin it produces to keep their blood sugar controlled.

Insulin resistance is the term sometimes used when the body can't correctly use the insulin it produces.



1 The body does not make enough insulin and/or does not produce it properly

2 As a result, the body's cells are less able to receive and use sugar



Sugar



Insulin



Insulin receptor

Important Safety Information for Toujeo U-300 (insulin glargine) injection (cont'd)

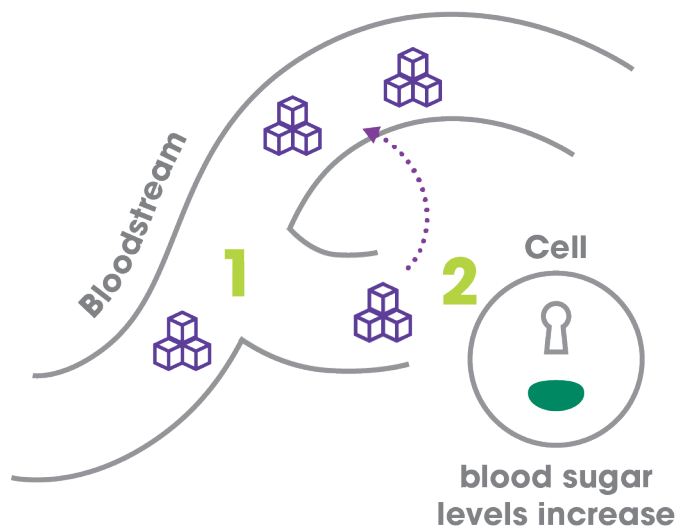
Before starting Toujeo, tell your doctor about all your medical conditions, including if you have liver or kidney problems, if you are pregnant or planning to become pregnant, or if you are breastfeeding or planning to breastfeed.

Please see full Important Safety Information for Toujeo throughout. Please [click here](https://products.sanofi.us/toujeo/toujeo.pdf) or visit <https://products.sanofi.us/toujeo/toujeo.pdf> for full Prescribing Information for Toujeo.

ABOUT TYPE 1 DIABETES

WHAT IS TYPE 1 DIABETES?

For people with type 1 diabetes, the body does not produce insulin at all and is managed with insulin therapy and other treatments.



1 The body doesn't make insulin

2 Without insulin, the body's cells are unable to receive and use sugar



Sugar



Insulin receptor

Important Safety Information for Toujeo U-300 (insulin glargine) injection (cont'd)

Change (rotate) your injection sites within the area you chose with each dose to reduce your risk of getting pitted or thickened skin (lipodystrophy) and skin with lumps (localized cutaneous amyloidosis) at the injection sites. **Do not** use the same spot for each injection or inject where the skin is pitted, thickened, lumpy, tender, bruised, scaly, hard, scarred, or damaged.

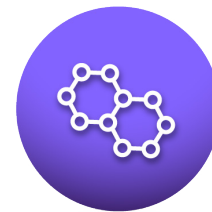
Please see full Important Safety Information for Toujeo throughout. Please [click here](https://products.sanofi.us/toujeo/toujeo.pdf) or visit <https://products.sanofi.us/toujeo/toujeo.pdf> for full Prescribing Information for Toujeo.

WHAT ABOUT HIGH AND LOW BLOOD SUGAR?

TWO HORMONES YOUR BODY NEEDS

Insulin is a hormone your pancreas produces naturally to help your body use blood sugar for energy—or store it for later use. It helps keep your blood sugar levels from getting too high. Your pancreatic beta cells make it. There's a second hormone that's also produced in the pancreas. It's called glucagon and your pancreatic alpha cells make it.

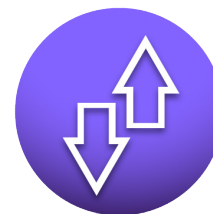
Together, these two hormones help maintain a balance in your body and keep your blood sugar stable at all times. But even with the help of these two hormones, your blood sugar can still get out of balance. Diabetes is a progressive disease that requires adjustments to how it's treated. Keep reading to learn more about high and low blood sugar.



WHAT IS HIGH AND LOW BLOOD SUGAR?

Even if you watch what you eat, you work out, and you follow your doctor's plan for taking your medicines, your blood sugar may not always be where it should be.

When this happens, you could have hyperglycemia (high blood sugar) or hypoglycemia (low blood sugar). And either one can be a problem. This is common to all insulins. So speak with your doctor about the warning signs of high blood sugar and low blood sugar. That's a great first step in creating a plan if either one happens to you. Tracking your blood sugar daily will help you and your doctor stay informed about how your treatment is working. Get your daily blood sugar log [here](#).



Important Safety Information for Toujeo U-300 (insulin glargine) injection (cont'd)

Heart failure can occur if you are taking insulin together with pills called TZDs (thiazolidinediones), even if you have never had heart failure or other heart problems. If you have heart failure, it may get worse while you take TZDs with Toujeo. Your treatment with TZDs and Toujeo may need to be changed or stopped by your doctor if you have new or worsening heart failure. Tell your doctor if you have any new or worsening symptoms including:

- Shortness of breath
- Sudden weight gain
- Swelling of your ankles or feet

Please see full Important Safety Information for Toujeo throughout. Please [click here](#) or visit <https://products.sanofi.us/toujeo/toujeo.pdf> for full Prescribing Information for Toujeo.

KNOW YOUR BLOOD SUGAR GOALS



There are usually two numbers you need to know when taking insulin: your A1C and your blood sugar level. Ask your doctor about your goals for both and write them down.



Blood sugar, also known as blood glucose, is the amount of sugar in your blood at any given time. Most people should check their blood sugar before and after meals and at bedtime, but your doctor will tell you exactly when you should. Get your blood sugar log [here](#).

1. My blood sugar goal:

Pre-meal _____ Post-meal _____

2. When I should check my blood sugar:

Fasting (morning) _____ Post-meal _____ Before bed _____

A1C, also known as hemoglobin A1C, is your average blood sugar level over 2 to 3 months. This gives you and your doctor a better picture of how well your blood sugar is being controlled over time. It should be measured during doctor visits every few months.

3. My A1C goal: _____

Important Safety Information for Toujeo U-300 (insulin glargine) injection (cont'd)

Tell your doctor about all the medications you take, including OTC medicines, vitamins, and supplements, and herbal supplements.

Please see full Important Safety Information for Toujeo throughout. Please [click here](#) or visit <https://products.sanofi.us/toujeo/toujeo.pdf> for full Prescribing Information for Toujeo.



WHAT ARE THE SYMPTOMS OF LOW BLOOD SUGAR?

When taking any medication, it's important to understand how it might affect your body. With insulin, the most common side effect is hypoglycemia, also known as low blood sugar. This is when your blood sugar levels drop below 70 mg/dL.

Some people may experience symptoms of low blood sugar, such as:

- Shaking
- Fast heartbeat
- Sweating
- Blurred vision

Some people may experience no symptoms at all. So, checking your blood sugar is key. Talk with your doctor to learn more about the signs and symptoms of low blood sugar.

IF YOU HAVE A HYPOGLYCEMIC EVENT

You and your family should take immediate action. Eat 15 grams of carbohydrates to raise your blood sugar, like:

- 3 or 4 glucose tablets
- 1/2 cup of fruit juice
- 6 to 8 hard candies
- 1 tablespoon of honey

After 15 minutes, check your blood sugar again. If it's still below 70 mg/dL, repeat by eating 15 grams more of fast-acting carbohydrates.

Once you've reached 70 mg/dL, have a meal or snack to make sure it doesn't get too low again.

Let your doctor know if you have experienced hypoglycemia. Preventing and managing hypoglycemia is an important part of your treatment plan.

Important Safety Information for Toujeo U-300 (insulin glargine) injection (cont'd)

Toujeo should be taken at the same time once a day. Test your blood sugar levels daily while using any insulin. Do not change your dose or type of insulin without talking to your doctor. Verify you have the correct insulin before each injection. **Do NOT use a syringe to remove Toujeo from your pen.** Your dose for Toujeo may be different from other insulins you have taken. Any change of insulin should be made cautiously and only under medical supervision.

Please see full Important Safety Information for Toujeo throughout. Please [click here](https://products.sanofi.us/toujeo/toujeo.pdf) or visit <https://products.sanofi.us/toujeo/toujeo.pdf> for full Prescribing Information for Toujeo.

Important Safety Information for Toujeo U-300 (insulin glargine) injection (cont'd)

Do NOT dilute or mix Toujeo with any other insulin or solution. It will not work as intended and you may lose blood sugar control, which could be serious. Use Toujeo only if the solution is clear and colorless with no particles visible.

While using Toujeo, do not drive or operate heavy machinery until you know how Toujeo affects you. Don't drink alcohol or use other medicines that contain alcohol.

The most common side effect of Toujeo is low blood sugar (hypoglycemia), which may be serious and life-threatening. Severe hypoglycemia may cause harm to your heart or brain. Symptoms of serious low blood sugar may include shaking, sweating, fast heartbeat, and blurred vision. The long-acting effect of Toujeo may delay recovery from low blood sugar compared to shorter-acting insulins.

Toujeo may cause severe allergic reactions that can lead to death. Get medical help right away if you have:

- A rash over your whole body
- Shortness of breath
- Swelling of your face, tongue, or throat
- Extreme drowsiness, dizziness, or confusion
- Trouble breathing
- Fast heartbeat
- Sweating

Toujeo may have additional side effects including swelling, weight gain, low potassium, and injection site reactions which may include change in fat tissue, skin thickening, redness, swelling, and itching.

Toujeo SoloStar and Toujeo Max SoloStar are single-patient-use prefilled insulin pens. It is important to perform a safety test when using a new pen for the first time. Talk to your doctor about proper injection technique and follow instructions in the *Instruction Leaflet* that comes with your Toujeo SoloStar or Toujeo Max SoloStar pen.

Please see full Important Safety Information for Toujeo throughout. Please [click here](https://products.sanofi.us/toujeo/toujeo.pdf) or visit <https://products.sanofi.us/toujeo/toujeo.pdf> for full Prescribing Information for Toujeo.

STARTING ON AND STAYING ON TOUJEO®

(insulin glargine) injection 300 Units/mL

Whether you're new to insulin or switching from another insulin, getting your dosage right is critical to managing your diabetes.

STARTING ON THE RIGHT DOSE

If you're new to insulin:

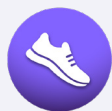
Your doctor will decide your dosage based on your needs, your blood sugar test results, and your blood sugar goal number.

If you're already on insulin:

You can expect to start on the same dose as your other long-acting insulin.

CREATING A ROUTINE

Taking Toujeo at the same time every day may help keep your blood sugar in control around the clock. To help ensure you stay on schedule, establish a routine to make it easier for you. Below are a few suggestions that may help. You can find more support at [TeamingUp](#).



After your morning walk



Before your favorite show



Right before bed

Other routine that works best for you. _____

What is Toujeo U-300 (insulin glargine) injection 300 Units/mL?

Prescription Toujeo is a long-acting man-made insulin used to control high blood sugar in adults and children who are 6 years of age and older with diabetes mellitus.

- Toujeo is not for the treatment of diabetic ketoacidosis
- It is not known if Toujeo is safe and effective in children under 6 years of age

Important Safety Information for Toujeo U-300 (insulin glargine) injection

Do not use Toujeo if you have low blood sugar or if you are allergic to insulin or any of the ingredients in Toujeo.

Please see full Important Safety Information for Toujeo throughout. Please [click here](#) or visit <https://products.sanofi.us/toujeo/toujeo.pdf> for full Prescribing Information for Toujeo.

STARTING ON AND STAYING ON TOUJEO

WHY IS MY DOSE CHANGING?

Diabetes is a progressive disease, and sometimes your doctor may need to adjust the dose of your medicine. It's often called titration, and it's a normal part of the process. Your doctor may give you a low dose at first, then increase your dose slowly over time. It's okay to talk to your doctor about this and be part of the decision-making process.



Once you have the right dose, there are some important things to do:

- Take your insulin at the same time every day
- Check your blood sugar daily
- Take your medications exactly as prescribed

All of this will help your doctor evaluate your dosing and know when adjustments have to be made.

Working with your doctor, decide which pen works best for you. Then set your goals. You can use this chart to write them down or download one [here](#).

- 1.** This is my starting dose of Toujeo: _____
- 2.** I need to adjust it by _____ unit(s) every _____ day(s)
or as my doctor indicates: _____
- 3.** My glucose levels need to reach _____ before
morning meals.

Important Safety Information for Toujeo U-300 (insulin glargine) injection (cont'd)

Do not share your pen(s) with other people, even if the needle has been changed. You may give other people a serious infection or get a serious infection from them.

Please see full Important Safety Information for Toujeo throughout. Please [click here](#) or visit <https://products.sanofi.us/toujeo/toujeo.pdf> for full Prescribing Information for Toujeo.

STARTING ON AND STAYING ON TOUJEO



KNOW YOUR BLOOD SUGAR GOALS

There are two numbers you need to know when taking insulin: **your A1C and your blood sugar.** Ask your doctor what your goals should be for both and write them down.

Blood sugar, also known as blood glucose, is the amount of sugar in your blood at any given time. Your doctor will tell you exactly when you should measure your blood sugar.

A1C is your average blood sugar level over 2 to 3 months. This lets you and your doctor know how well your blood sugar is being controlled over time. Your A1C should be measured during doctor visits twice a year if you're meeting your treatment goals.

Learn more about your blood sugar goals [here](#).



Get support at [TeamingUp](#) to help you manage your diabetes. Learn how to plan and cook delicious meals, create exercise routines, and more. You can also access this information by scanning the code.



Important Safety Information for Toujeo U-300 (insulin glargine) injection (cont'd)

Before starting Toujeo, tell your doctor about all your medical conditions, including if you have liver or kidney problems, if you are pregnant or planning to become pregnant, or if you are breastfeeding or planning to breastfeed.

Change (rotate) your injection sites within the area you chose with each dose to reduce your risk of getting pitted or thickened skin (lipodystrophy) and skin with lumps (localized cutaneous amyloidosis) at the injection sites. **Do not** use the same spot for each injection or inject where the skin is pitted, thickened, lumpy, tender, bruised, scaly, hard, scarred, or damaged.

Please see full Important Safety Information for Toujeo throughout. Please [click here](#) or visit <https://products.sanofi.us/toujeo/toujeo.pdf> for full Prescribing Information for Toujeo.

STARTING ON AND STAYING ON TOUJEO



HYPOGLYCEMIA: HAVING A PLAN

For all insulins, including Toujeo, the most common side effect is hypoglycemia, also known as low blood sugar. This is typically defined as when your blood sugar level is below 70 mg/dL, but you can confirm this with your doctor.

You should be familiar with the symptoms of hypoglycemia, which may include:

- Feeling cold
- A rapid heartbeat
- Nausea
- Shakiness or dizziness
- Hunger
- Confusion

WHAT TO DO IF YOU HAVE A HYPOGLYCEMIC EVENT

IMPLEMENT THE PLAN THAT YOU AND YOUR DOCTOR HAVE DISCUSSED.

Eat 15 grams of carbohydrates to raise your blood sugar, such as:

- glucose tablets (see instructions)
- 1/2 cup of fruit juice
- 6 to 8 hard candies
- 1 tablespoon of honey

After 15 minutes, check your blood sugar again. If it's still below 70 mg/dL, repeat by eating 15 grams more of fast-acting carbohydrates. Once you've reached that level, have a meal or snack to make sure it doesn't get too low again. Let your doctor know if you have experienced hypoglycemia. Preventing and managing hypoglycemia is an important part of your treatment plan.



PAY NO MORE THAN \$35* IN CO-PAYS

Have insurance? Be sure to download your co-pay savings card.

Don't have insurance? Sanofi offers the Valyou Savings Program, which provides users with a prescription cost of \$35.* Find out more about both programs [here](#).

*See Eligibility Restrictions & Offer Terms below.

Please see full Important Safety Information for Toujeo throughout. Please [click here](#) or visit <https://products.sanofi.us/toujeo/toujeo.pdf> for full Prescribing Information for Toujeo.

Important Safety Information for Toujeo U-300 (insulin glargine) injection (cont'd)

Heart failure can occur if you are taking insulin together with pills called TZDs (thiazolidinediones), even if you have never had heart failure or other heart problems. If you have heart failure, it may get worse while you take TZDs with Toujeo. Your treatment with TZDs and Toujeo may need to be changed or stopped by your doctor if you have new or worsening heart failure. Tell your doctor if you have any new or worsening symptoms including:

- Shortness of breath
- Sudden weight gain
- Swelling of your ankles or feet

Tell your doctor about all the medications you take, including OTC medicines, vitamins, and supplements, and herbal supplements.

Toujeo should be taken at the same time once a day. Test your blood sugar levels daily while using any insulin. Do not change your dose or type of insulin without talking to your doctor. Verify you have the correct insulin before each injection. **Do NOT use a syringe to remove Toujeo from your pen.** Your dose for Toujeo may be different from other insulins you have taken. Any change of insulin should be made cautiously and only under medical supervision.

Do NOT dilute or mix Toujeo with any other insulin or solution. It will not work as intended and you may lose blood sugar control, which could be serious. Use Toujeo only if the solution is clear and colorless with no particles visible.

While using Toujeo, do not drive or operate heavy machinery until you know how Toujeo affects you. Don't drink alcohol or use other medicines that contain alcohol.

The most common side effect of Toujeo is low blood sugar (hypoglycemia), which may be serious and life-threatening. Severe hypoglycemia may cause harm to your heart or brain. Symptoms of serious low blood sugar may include shaking, sweating, fast heartbeat, and blurred vision. The long-acting effect of Toujeo may delay recovery from low blood sugar compared to shorter-acting insulins.

Toujeo may cause severe allergic reactions that can lead to death. Get medical help right away if you have:

- A rash over your whole body
- Shortness of breath
- Swelling of your face, tongue, or throat
- Extreme drowsiness, dizziness, or confusion
- Trouble breathing
- Fast heartbeat
- Sweating

Toujeo may have additional side effects including swelling, weight gain, low potassium, and injection site reactions which may include change in fat tissue, skin thickening, redness, swelling, and itching.

Toujeo SoloStar and Toujeo Max SoloStar are single-patient-use prefilled insulin pens. It is important to perform a safety test when using a new pen for the first time. Talk to your doctor about proper injection technique and follow instructions in the *Instruction Leaflet* that comes with your Toujeo SoloStar or Toujeo Max SoloStar pen.

Please see full Important Safety Information for Toujeo throughout. Please [click here](https://products.sanofi.us/toujeo/toujeo.pdf) or visit <https://products.sanofi.us/toujeo/toujeo.pdf> for full Prescribing Information for Toujeo.

***Eligibility Restrictions & Offer Terms:**

Insulins Valyou Savings Program: This savings program is not insurance. For a complete list of participating brands, products, and National Drug Codes (NDCs) [Click Here](#). This offer is not valid for prescriptions covered by or submitted for reimbursement, in whole or in part, under Medicare, Medicaid, VA, DOD, TRICARE, similar federal or state programs, including any state pharmaceutical programs, or commercial/private insurance. Only patients without prescription medication insurance can apply for this offer. Void where prohibited by law. For the duration of the program, eligible cash paying patients will pay \$35 per 30 Day Supply. To pay \$35 per 30 Day Supply, you must fill all your Sanofi Insulin prescriptions at the same time, together each month. The Insulins Valyou Savings Program applies to the cost of medication. There are other relevant costs associated with overall treatment. Sanofi reserves the right to rescind, revoke, terminate, or amend this offer, eligibility, and terms of use at any time without notice. Upon registration, patients will receive all program details. For questions regarding your eligibility or benefits, or if you wish to discontinue your participation, call the Insulins Valyou Savings Program at (833) 813-0190 (8:00 am-8:00 pm EST, Monday-Friday).


Sanofi Insulins Co-pay Savings Program: This savings program is not insurance. For a complete list of participating brands, products, and National Drug Codes (NDCs) [Click Here](#). This offer is not valid for prescriptions covered by or submitted for reimbursement, in whole or in part, under Medicare, Medicaid, VA, DOD, TRICARE, similar federal or state programs, including any state pharmaceutical programs. If you have an Affordable Care (Health Care Exchange) plan, you may still be qualified to receive and use this savings card. Please note: the Federal Employees Health Benefits (FEHB) Program is not a federal or state government health care program for purposes of the savings program. Void where prohibited by law. For the duration of the program, eligible commercially insured patients pay no more than \$35 per 30-day supply, up to 10 packs per fill; Offer valid for one fill every 30 days. Savings may vary depending on patients' out-of-pocket costs. The Sanofi Insulins Co-pay Savings Program applies to the cost of medication. There are other relevant costs associated with overall treatment. Sanofi reserves the right to rescind, revoke, terminate, or amend this offer, eligibility, and terms of use at any time without notice. Upon registration, patients will receive all program details. For questions regarding your eligibility or benefits, or if you wish to discontinue your participation, call the Sanofi Insulins Co-pay Savings Program at (866) 255-8661 (8:00 am-8:00 pm EST, Monday-Friday).

MAT-US-2302912-v2.0-11/2023

© 2023 sanofi-aventis US LLC.

All rights reserved.

Please see full Important Safety Information for Toujeo throughout. Please [click here](#) or visit <https://products.sanofi.us/toujeo/toujeo.pdf> for full Prescribing Information for Toujeo.

**Toujeo**
insulin glargine injection 300 Units/mL

sanofi

FREQUENTLY ASKED QUESTIONS



Check here for questions you may have about getting started on Toujeo or Toujeo Max



1

How do I know if Toujeo® Max SoloStar® (insulin glargine) injection 300 Units/mL is right for me?

Toujeo Max is the most concentrated long-acting insulin available. It can hold 900 units of insulin in a same-size pen compared to a standard long-acting insulin pen. Because it's concentrated, you inject less liquid each time. So you may use fewer pens over time. After you open a Toujeo SoloStar or Toujeo Max SoloStar pen, it can be stored at room temperature up to 86°F (30°C), and it uses the smallest needles available for insulin pens. Your doctor will decide which pen is best for you.

[What is Toujeo Max?](#) ▶

2

Can Toujeo be taken with diabetes pills or other diabetes medications?

Yes, but your doctor will determine which medications are right for you. Talk with your doctor about the medications and supplements you take, especially those called thiazolidinediones (TZDs) because they can change how insulin works.

3

Will I need to change the dose or how often I take mealtime insulin while on Toujeo?

Ask your doctor about any adjustments that need to be made to any other medications, including mealtime insulin, while taking once-daily Toujeo.

[Learn more about starting on and staying on Toujeo](#) ▶

What is Toujeo U-300 (insulin glargine) injection 300 Units/mL?

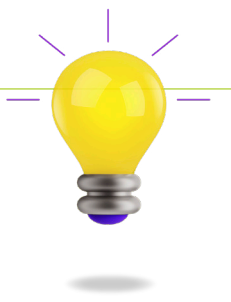
Prescription Toujeo is a long-acting man-made insulin used to control high blood sugar in adults and children who are 6 years of age and older with diabetes mellitus.

- Toujeo is not for the treatment of diabetic ketoacidosis
- It is not known if Toujeo is safe and effective in children under 6 years of age

Important Safety Information for Toujeo U-300 (insulin glargine) injection

Do not use Toujeo if you have low blood sugar or if you are allergic to insulin or any of the ingredients in Toujeo.

Please see full Important Safety Information for Toujeo throughout. Please [click here](#) or visit <https://products.sanofi.us/toujeo/toujeo.pdf> for full Prescribing Information for Toujeo.



FREQUENTLY ASKED QUESTIONS

4

What if I've never used a Toujeo long-acting insulin pen before?

Toujeo pens have the most concentrated insulin of any pen, so you'll have less liquid to inject. Toujeo pens also use the smallest needles available for insulins, and 95% of patients said Toujeo SoloStar was easy to use.* This video will show you step by step how to use your Toujeo pen.

[How to use Toujeo insulin](#) ▶

5

Will my Toujeo dose stay the same once I start?

Your healthcare provider will recommend a starting dose of Toujeo and adjust it over time to the dose that best helps you reach your blood sugar level goals. Adjusting your dose is called titration and it's a normal part of the process. Talk to your doctor about it. Being involved in these decisions is an important part of managing your diabetes.

[Tips for Starting On, Staying On Toujeo](#) ▶

6

Why should I take Toujeo at the same time each day?

You should take once-daily, long-acting Toujeo at the same time each day because it may help improve your blood sugar control around the clock. That's why it's important to set up a daily routine and to work with your doctor to choose a time that fits best with your schedule.

[Learn more about creating a routine](#) ▶

*At the end of a 4-week study of 40 patients, 95% of first-time insulin users with type 2 diabetes rated the Toujeo SoloStar pen as easy to use.

All patients in the study were trained on how to use the pen by healthcare providers. It is important to ask your healthcare provider to show you how to use the pen before using it.

Important Safety Information for Toujeo U-300 (insulin glargine) injection (cont'd)

Do not share your pen(s) with other people, even if the needle has been changed. You may give other people a serious infection or get a serious infection from them.

Before starting Toujeo, tell your doctor about all your medical conditions, including if you have liver or kidney problems, if you are pregnant or planning to become pregnant, or if you are breastfeeding or planning to breastfeed.

Please see full Important Safety Information for Toujeo throughout. Please [click here](#) or visit <https://products.sanofi.us/toujeo/toujeo.pdf> for full Prescribing Information for Toujeo.



FREQUENTLY ASKED QUESTIONS

7

What is “time in range”?

Time in range (TIR) is the amount of time you spend in the target blood glucose (blood sugar) range that’s often set by your doctor (between 70 and 130 mg/dL for most people). One way to monitor your TIR is with continuous glucose monitors (CGMs). They provide information about how much time a person spends in their target glucose range. TIR can help people with diabetes and their healthcare providers assess how well glucose levels are being managed, and make adjustments to treatment plans as needed.

[Find out more about CGMs](#) ▶

8

What is the most common side effect of Toujeo?

For all insulins, including Toujeo, the most common side effect is when your blood sugar drops below the normal range. This is called hypoglycemia. Ask your doctor about the signs and symptoms of hypoglycemia, how to monitor your blood sugar, and what to do if you have a hypoglycemic event. You are encouraged to report side effects of prescription drugs to the FDA. Visit www.fda.gov/medwatch or call 1-800-FDA-1088.

[Find out more about side effects](#) ▶

9

What if I change my insurance?

If you change your insurance, let your doctor know to make sure you are still covered. You can find out by using the coverage finder at <https://www.toujeo.com/toujeo-medicare-part-d-coverage>. In the meantime, your pharmacy will provide you with a one-time, 30-day-supply transition refill of your prescription medication at your same co-pay. Be sure to call your health insurance plan directly to confirm coverage.

[Learn more about Coverage and Savings](#) ▶

Important Safety Information for Toujeo U-300 (insulin glargine) injection (cont’d)

Change (rotate) your injection sites within the area you chose with each dose to reduce your risk of getting pitted or thickened skin (lipodystrophy) and skin with lumps (localized cutaneous amyloidosis) at the injection sites. **Do not** use the same spot for each injection or inject where the skin is pitted, thickened, lumpy, tender, bruised, scaly, hard, scarred, or damaged.

Please see full Important Safety Information for Toujeo throughout. Please [click here](#) or visit <https://products.sanofi.us/toujeo/toujeo.pdf> for full Prescribing Information for Toujeo.



FREQUENTLY ASKED QUESTIONS

10

What if there is not enough insulin left in my pen to inject?

If there is not enough insulin for your dose, don't worry. You can use another pen to finish your dose. Remember to always use a new needle, follow the *Instructions for Use* that comes with your pen, and perform a safety test. The pen will not let you dial more than the number of units left in it. For example, if you need 40 units and there are only 10 units left in the pen, you will need 30 units from the new pen.

11

How often should I do a safety test?

A safety test should be performed before every injection. This can prevent issues with the dose selector on your pen.

12

What if I turn the dose selector without the needle attached?

Turning the dose selector could potentially damage your pen and keep you from using the insulin in your pen.



Important Safety Information for Toujeo U-300 (insulin glargine) injection (cont'd)

Heart failure can occur if you are taking insulin together with pills called TZDs (thiazolidinediones), even if you have never had heart failure or other heart problems. If you have heart failure, it may get worse while you take TZDs with Toujeo. Your treatment with TZDs and Toujeo may need to be changed or stopped by your doctor if you have new or worsening heart failure. Tell your doctor if you have any new or worsening symptoms including:

- Shortness of breath
- Sudden weight gain
- Swelling of your ankles or feet

Please see full Important Safety Information for Toujeo throughout. Please [click here](#) or visit <https://products.sanofi.us/toujeo/toujeo.pdf> for full Prescribing Information for Toujeo.

Important Safety Information for Toujeo U-300 (insulin glargine) injection (cont'd)

Tell your doctor about all the medications you take, including OTC medicines, vitamins, and supplements, and herbal supplements.

Toujeo should be taken at the same time once a day. Test your blood sugar levels daily while using any insulin. Do not change your dose or type of insulin without talking to your doctor. Verify you have the correct insulin before each injection. **Do NOT use a syringe to remove Toujeo from your pen.** Your dose for Toujeo may be different from other insulins you have taken. Any change of insulin should be made cautiously and only under medical supervision.

Do NOT dilute or mix Toujeo with any other insulin or solution. It will not work as intended and you may lose blood sugar control, which could be serious. Use Toujeo only if the solution is clear and colorless with no particles visible.

While using Toujeo, do not drive or operate heavy machinery until you know how Toujeo affects you. Don't drink alcohol or use other medicines that contain alcohol.

The most common side effect of Toujeo is low blood sugar (hypoglycemia), which may be serious and life-threatening. Severe hypoglycemia may cause harm to your heart or brain. Symptoms of serious low blood sugar may include shaking, sweating, fast heartbeat, and blurred vision. The long-acting effect of Toujeo may delay recovery from low blood sugar compared to shorter-acting insulins.

Toujeo may cause severe allergic reactions that can lead to death. Get medical help right away if you have:

- A rash over your whole body
- Shortness of breath
- Swelling of your face, tongue, or throat
- Extreme drowsiness, dizziness, or confusion
- Trouble breathing
- Fast heartbeat
- Sweating

Toujeo may have additional side effects including swelling, weight gain, low potassium, and injection site reactions which may include change in fat tissue, skin thickening, redness, swelling, and itching.

Toujeo SoloStar and Toujeo Max SoloStar are single-patient-use prefilled insulin pens. It is important to perform a safety test when using a new pen for the first time. Talk to your doctor about proper injection technique and follow instructions in the *Instruction Leaflet* that comes with your Toujeo SoloStar or Toujeo Max SoloStar pen.

Please see full Important Safety Information for Toujeo throughout. Please [click here](https://products.sanofi.us/toujeo/toujeo.pdf) or visit <https://products.sanofi.us/toujeo/toujeo.pdf> for full Prescribing Information for Toujeo.

©2023 sanofi-aventis US LLC.

All rights reserved.

MAT-US-2303049-v1.0-04/2023